



EDMAPLAC® 450

INSTRUCTION AND SECURITY MANUAL

EDMA
building tools

REF. 267355

BOARD LIFTER

READ THIS MANUAL CAREFULLY BEFORE THE FIRST USE



- Respect the safety instructions in order to avoid injuries or damages on surrounding elements.
- Follow the operating instructions to avoid damaging the tool.



HANDLE FOR TILTING
THE TOP RACK

SPECIFICATIONS

Reference : 267355

Maximum loading weight : 80 kg (175 lbs)

Maximum board dimensions : 1,20 x 3,60 m (3,94 x 11,81 Ft)

Minimum board dimensions : 0.15 x 0.60 m (0.49 x 1.97 Ft)

Maximum height with extension part : 4,50 m (14,76 Ft)

Maximum height without extension part : 3,50 m (11,48 Ft)

Minimum height : 161 cm (5,28 Ft)

Maximum vertical lifting height with 2,50 m (8,2 Ft) height board : 6,25 m (20,51 Ft)

Board loading height : 84 cm (2,76 Ft) without extension

Minimum width in moving/storage position : 63 cm (243/4")

Total gross weight: 53 kg (117 lbs)

SAFETY BRAKE
LEVER

STEERING WHEEL

HANDLE TO ANGLE
THE TOP RACK

MAIN BRAKE LEVER

POWER DRILL
SUPPORT BASE

WEAR PARTS

Ref 526730 - Brake lining

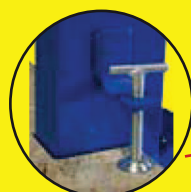
Ref 526731 - Metallic cable

Ref 526733 - Wheel with brake

Ref 526734 - Wheel without brake

SPARE PARTS

- Ref 526732 - Hex bit for using with power drill
- Ref 526761 - Steering wheel central screw
- Ref 526735 - Top rack retractable stopper
- Ref 526756 - Steering wheel
- Ref 526740 - Steering wheel handle
- Ref 526746 - Main brake lever
- Ref 526747 - Removable pin
- Ref 526741 - Balance bar with wheels
- Ref 526742 - Power drill support base
- Ref 526737 - Middle foot
- Ref 526744 - Side foot with brake
- Ref 526743 - Side foot without brake
- Ref 526745 - Top rack
- Ref 526749 - Right arm
- Ref 526748 - Left arm
- Ref 526757 - Extension tube
- Ref 526758 - Internal tube
- Ref 526736 - Wooden platform
- Ref 526754 - 43 mm (13/4") screw + nut
- Ref 526753 - 58 mm (21/4") screw + nut
- Ref 526751 - 68 mm (25/8") screw + nut
- Ref 526750 - 78 mm (31/8") screw + nut
- Ref 526755 - Nut



CLAMPING
SCREW

WOODEN PLATFORM

REMOVABLE
PIN



demo video



how-to video

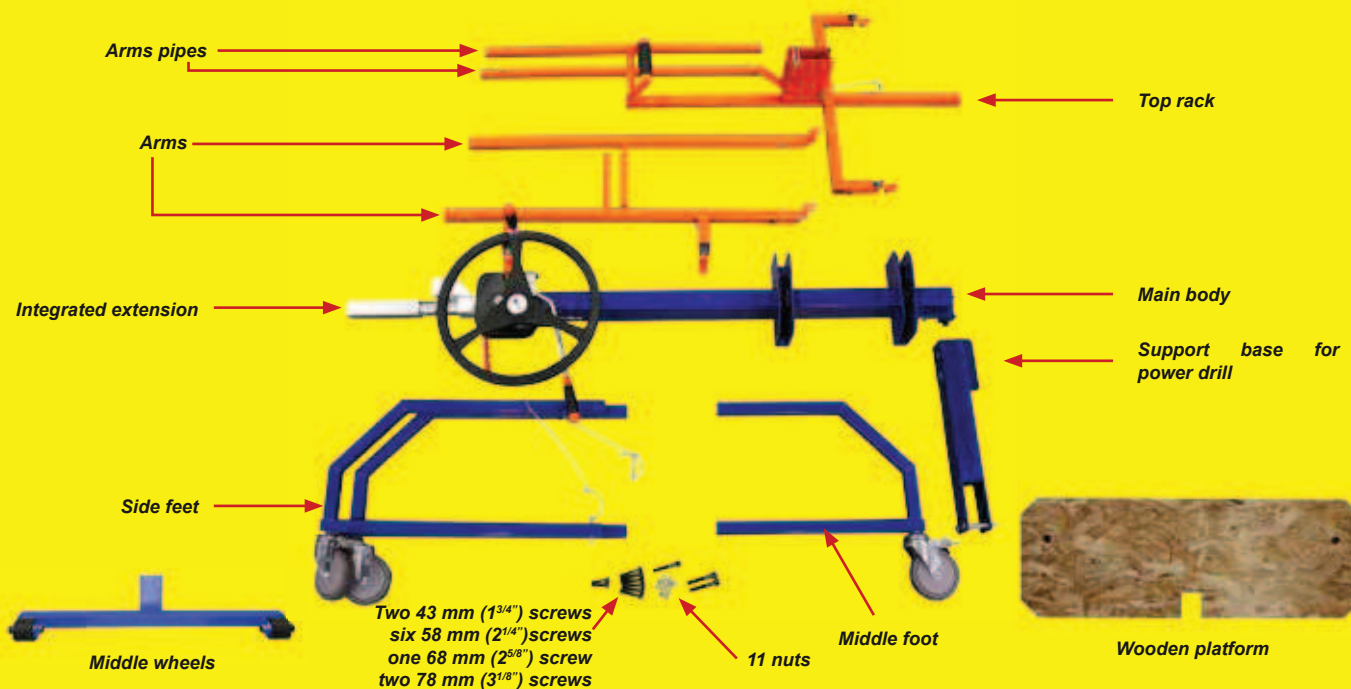
INSTRUCTION AND SECURITY MANUAL

EDMAPLAC[®] 450

REF. 267355

EDMAPLAC[®] 450 ASSEMBLY INSTRUCTIONS

NECESSARY TOOLS : 13 MM (1/2") FLAT WRENCH, 6 MM (1/4") HEX WRENCH



- 1** Fix the balance bar with wheels to the main body with the two 78 mm (3 1/8") screws and nuts. Use a 13 mm (1/2") flat wrench and a 6 mm (1/4") hex wrench.



- 2** Fix the lateral and central feet to the base frame with the six 58 mm (2 1/4") screws and nuts. Use a 13 mm (1/2") flat wrench and a 6 mm (1/4") hex wrench.

Position the side feet with brake on the same side than the security and main brake levers.

The central foot is the shortest foot. The central foot nuts have to be firmly tightened because it doesn't rotate like the side feet.



- 3** Open the 2 side feet and insert the removable pin in the base frame hole following the selected configuration.

HORIZONTAL CEILING SETTING
AND SLOPING CEILING



VERTICAL SETTING



STORAGE/MOVING POSITION



The top rack must be in low position while changing the feet position.

INSTRUCTION AND SECURITY MANUAL

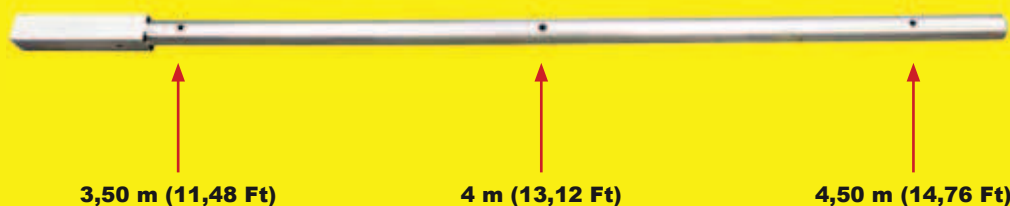
EDMAPLAC® 450

REF. 267355

MAJ - 11/16

- 4** Insert the 1 m (3,28 Ft) extension in the frame and lock it in the selected hole with the corresponding removable pin.

The extension has 3 different height positions : 3,50 m (11,48 Ft), 4 m (13,12 Ft) and 4,50 m (14,76 Ft).



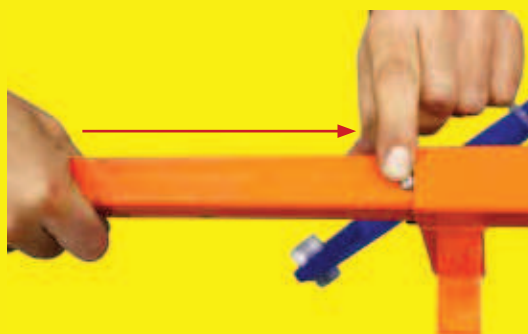
- 5** Insert the top rack in the extension base and fix it with the 68 mm (2^{5/8"}) screw and nut.



- 6** Assemble the arms with the two 43 mm (1^{3/4"}) screws and nuts, using a 13 mm (1/2") flat wrench and a 6 mm (1/4") hex wrench. Make the arms marks match : R with R and L with L.



- 7** Insert the arms in the top rack according to the position selected. When you are in front of the steering wheel, put the R arm on your right and the L arm on your left. The retractable pins must be locked in the corresponding holes.



- 8** Fix the power drill support base to the main body with the 2 provided screws and tighten the wing nuts to lock the support base.

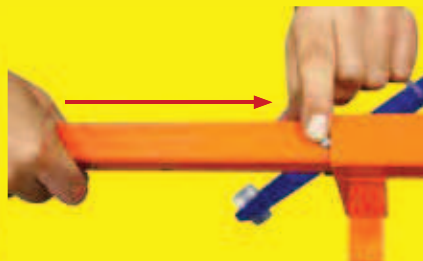


OPERATING INSTRUCTIONS

- 1** Lift the latch to unlock the top rack and tilt it completely.



- 2** Insert the arms in the tube according to the selected setting, the retractable pin must be locked in the hole.



- 3** Block the 2 wheel brakes, then load the board.



- 4** Pull the handle to position the board on the chosen configuration.



INSTRUCTION AND SECURITY MANUAL

EDMAPLAC® 450

REF. 267355

MAJ - 11/16

OPERATING INSTRUCTIONS

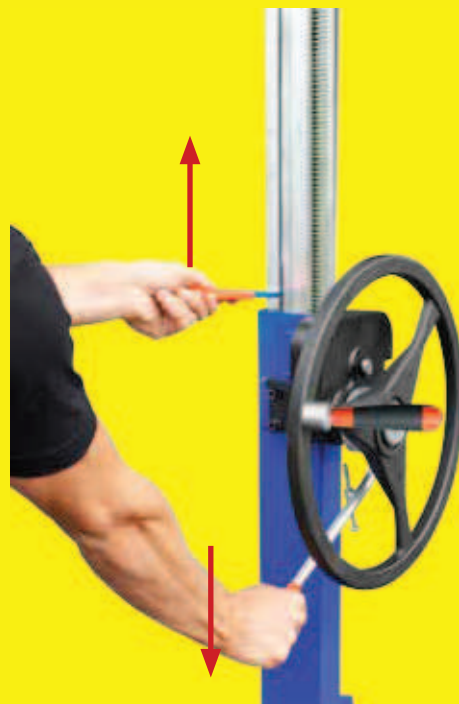
- 5** Unlock the 2 wheel brakes and turn the steering wheel while pushing the main brake lever to lift the board.



- 6** Once the board touches the ceiling, position the board perfectly and lock the wheel brakes while screwing the board.



- 7** Push the brake lever while lifting the safety brake latch, to lower the top rack. If you have to lower the top rack loaded, pay attention to control the descent by pushing slightly on the main brake lever. In case of a main brake default, release immediately the safety brake lever in order to stop the descent right away.



INSTRUCTION AND SECURITY MANUAL

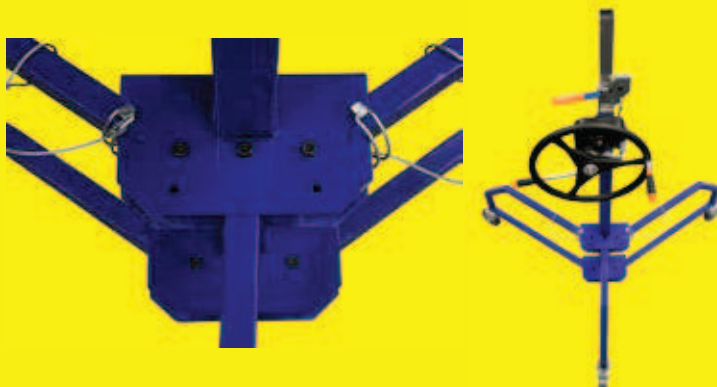
EDMAPLAC®450

REF. 267355

LOADING CONFIGURATIONS

HORIZONTAL CEILING AND SLOPING CEILING SETTING

- ① Open the feet as much as possible and insert each removable pin in the 3rd hole of the base frame.



- ② Insert the arms in the horizontal tubes, the retractable pin must be locked in the selected hole.



- ③A CEILING SETTING

Once the board loaded, pull the top rack handle to put the board in horizontal position.

Position the panel lifter with the steering wheel in front of the wall to lift the board along the wall.



- ③B HORIZONTAL SLOPING CEILING

Once the board loaded, pull out the removable pin to unlock the top rack, then pull the handle to angle the board. Insert the removable pin in the sloping ceiling position hole (45° position). The top rack position is adjusted according to the ceiling angle while the board is touching the ceiling.



- ④ Turn the steering wheel while pushing the main brake lever to lift the board up to the ceiling.

LOADING CONFIGURATIONS

VERTICAL LIFTING AND VERTICAL SLOPING CEILING SETTING

1

Insert the arms in the vertical tubes, the retractable pin must be locked in the selected hole according to the board dimensions.

- 1st hole for vertical sloping ceiling
- 2nd hole (with "vertical position" marking) for vertical setting



2A

VERTICAL SLOPING CEILING

Once the board loaded, pull out the removable pin to unlock the top rack, then pull the handle to angle the board and insert the removable pin in the sloping ceiling position hole (45° position).

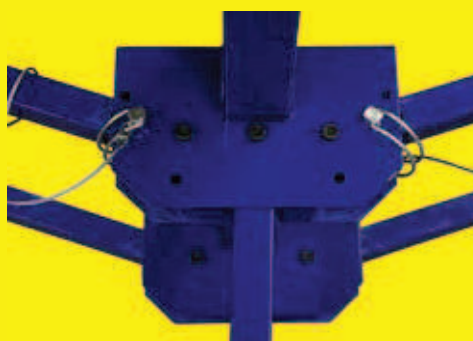
The top rack position is adjusted according to the ceiling angle while the board is touching the ceiling.



2B

VERTICAL SETTING

Once the board loaded, position the EDMAPLAC® 450 along the vertical wall. Pull out the removable pins from the 2 lateral feet and open them up to the 2nd hole of the frame base. Insert the removable pins to lock the feet. Pull out the removable pin from the top rack in order to angle the board completely on vertical position, while pushing the EDMAPLAC® 450 along the wall thanks to the top rack handle. Lock the 2 wheel brakes.



3

Turn the steering wheel while pushing the main brake lever to lift the board.



INSTRUCTION AND SECURITY MANUAL

EDMAPLAC®450

REF. 267355

MAJ - 11/16

AUTOMATIC USE ASSISTED BY POWER DRILL

- 1 First of all, you must use the power drill support base for safety reason. Then, set up the EDMAPLAC®450 according to the selected setting configuration.

- 2 Insert the hex bit in the power drill chuck



- 3 Adjust the power drill support base according to the power drill dimensions.



- 4 Insert the hex bit fixed to the power drill, in the hex hole located in the middle of the steering wheel. Turn the power drill to block it against the power drill support base. Set the power drill on "maximum torque - low speed", rotating on clockwise direction.



POWER DRILL MINI 14.4 VOLTS - 3 Ah

- 5 Pull the power drill trigger to lift the board.



- 6 To lower the top rack, remove the power drill first, then push the main brake lever while lifting up the safety brake latch.

INSTRUCTION AND SECURITY MANUAL

EDMAPLAC® 450

REF. 267355

SAFETY INSTRUCTIONS



PRECAUTIONS BEFORE USE

- Make sure all the parts are perfectly well assembled
- Make sure all the nuts are well tight and the removable pins are in position.
- Remove the dust from the gear as well as the rack and pinion.
- Make sure the retractable pins are well locked in their holes.
- Before each use, make a general operational checking.
- **Make sure the cable is in good condition. Do not hesitate to change it as soon as the tiniest imperfection is visible : crushing, pinching, wire breaking.**
- **Make sure the main brake is in good condition and well adjusted. Once the board lifted at the required height, it has to stay in position when the safety brake is unlocked. If the top rack goes down, tighten the main brake by turning the knurled nut clockwise direction.**



GENERAL SAFETY WARNINGS

- This tool is exclusively dedicated to the plasterboard setting.
- The maximum loading weight is 80 kg (175 lbs). Do not exceed the maximum weight in order to avoid a premature wear.
- Do not use EDMAPLAC® 450 as a freight elevator or person elevator.
- Do not grease or oil the rack and pinion as well as the gear.
- The top rack must be in low position while changing the feet position.
- Do not use the tool carrier wooden board as a working platform. Use a stepladder or a regulatory working platform to screw the board onto the ceiling.
- Do not hinder the wheels while using. It may cause a failover of the device.
- Do not clutter up the working area in order to move the EDMAPLAC® 450 easier.
- Do not put your hand through the steering wheel while the top rack is lowering. It may cause hand or finger injuries.
- Do not let children use the EDMAPLAC® 450.
- Do not erase the EDMAPLAC® 450 warning markings.
- Any modifications on the tool are not allowed.
- Once the board lifted at the required height, it has to stay in position when the safety brake is unlocked. If the board goes down, tighten the main brake by turning the knurled nut clockwise direction. If the board is heavier than a standard board (more than 25 kg), turn the knurled nut clockwise direction to increase the spring power. If the board still goes down even with the knurled nut at its tightest, change the brake lining.
- Use the EDMAPLAC® 450 on a firm and stable surface which can support the weight of the tool and plasterboard.
- Lock the 2 wheel brakes while lifting a board.
- The user has to ensure his own safety as well as the safety of the other people around the EDMAPLAC® 450.
- In order to avoid collision with the top rack during its descent, use the main brake to regulate the speed. In case of a main brake default, release immediately the safety brake lever in order to stop the descent right away.
- Wearing a helmet : follow the current legislation
- Have the device checked regularly by a control agency (decree of 1st march 2004).

CABLE REPLACEMENT

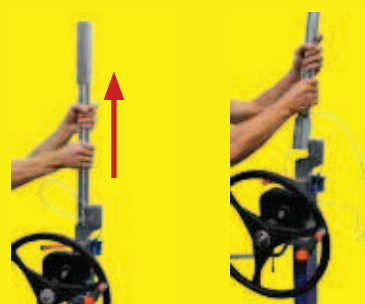
NECESSARY TOOLS : 10 (3/8") AND 17 MM (11/16") FLAT WRENCH, 5 (3/16") AND 8 MM (5/16") HEX WRENCH

A WITHDRAWAL OF USED CABLE

- ① Unscrew the axis maintaining the pulley and remove it with a 17 mm (11/16") flat wrench and an 8 mm (5/16") hex wrench.



- ② Pull the internal tube out.



- ③ Remove the pulley.



- ④ Unscrew the nut from the axis maintaining the cable to the main body. Use a 10 mm (3/8") flat wrench and a 5 mm (3/16") hex wrench.



- ⑤ Unscrew the screw from the main body with a 5 mm (3/16") hex wrench, in order to remove the cable completely.



B NEW CABLE INSTALLATION

- ① Put the axis through the cable loop to fix it to the internal tube.
- ② Fix the opposite cable loop to the main body with the provided screw.
- ③ Put the pulley back to its location.

- ④ Put the principal tube back in the main body.



- ⑤ Put the axis maintaining the pulley back and tighten the nut on the axis with a 17 mm (11/16") flat wrench and an 8 mm (5/16") hex wrench. For this step, the internal tube must not be completely inserted in the frame.



BRAKE LINING REPLACEMENT

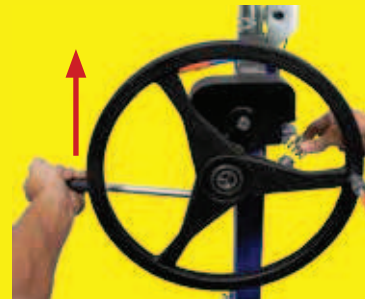
NECESSARY TOOLS : 6 MM (1/4") HEX WRENCH

A WITHDRAWAL OF BRAKE LINING

- ① Unscrew the central axis of the steering wheel with a 6 mm (1/4") hex wrench.



- ② Remove the spring by lifting the main brake lever.



- ③ Pull the steering wheel to remove it from the axis. Be careful not to lose the small key while pulling the steering wheel.



- ④ Pull the brake lining to remove it from its location.



B NEW BRAKE LINING INSTALLATION

- ① Insert the brake lining in its location.



- ② Put the steering wheel on the main axis and make sure that the small key is in its location.



- ③ Replace the spring.

- ④ Screw the steering wheel central axis.

EDMAPLAC® 450



In conformity with European directive "MACHINERY" 2006/42/CE.
Approved by the VERITAS conformity report # 628 8214-1.



EDMA S.A.S
TECHNOPARC EPSILON 1
616, Rue Isaac Newton
83700 SAINT-RAPHAËL
FRANCE
Tel. : +33 (0)4 94 44 70 70
Fax : +33 (0)4 94 44 70 71
Internet : www.edma.fr
Email : contact@edma.fr