

SPREHN®



Danish design since 1893 — By DVA —

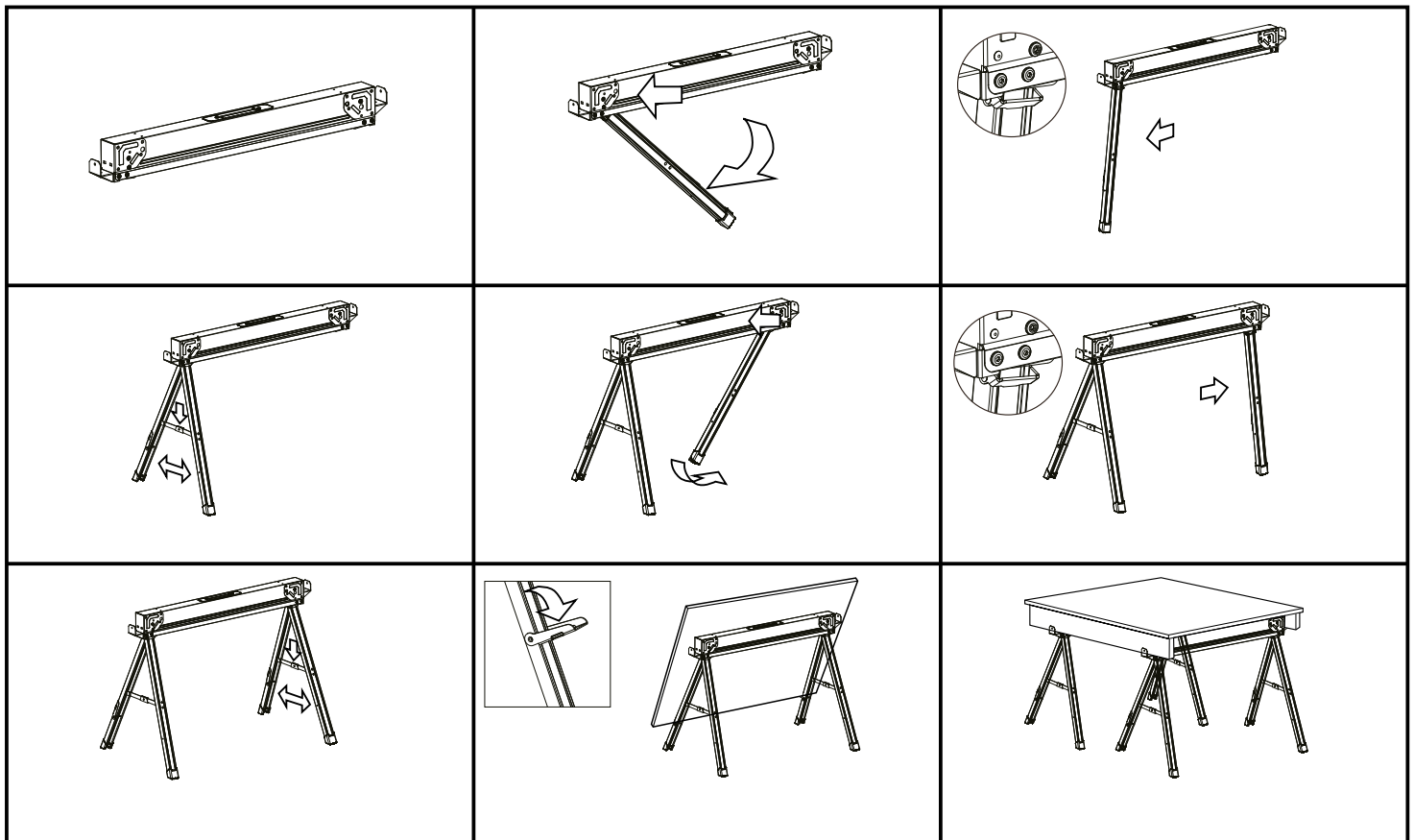
MANUAL

Basicline sawhorse

Manual for:
34638

DVA A/S • Meterbuen 26-28 • 2740 Skovlunde

SAWHORSE



Warning

Please read and follow the instructions to reduce the risk of personal injury.

User guide

1. When moving the sawhorse, use proper lifting techniques to avoid personal injury.
2. Keep your work area tidy and sufficiently illuminated.
3. Only use the sawhorse on a flat, dry, hard, and level surface.
4. The legs of the sawhorse must be fully extended, and the cross brace locked. Ensure all 4 legs have full contact with the surface. If the sawhorse position is not level, your material might slide and potentially cause damage to the material or personal injury.
5. Do not overload the sawhorse (maximum capacity 500 kg). By using two sawhorses, the capacity doubles by evenly distributed load.
6. Never stack sawhorses to obtain extra height.
7. Do not stand on the sawhorse.

